



REMEDIAL INVESTIGATION
& FEASIBILITY STUDIES

“BROWNFIELDS REDEVELOPMENT”

AFS[®] SYSTEM – EXPEDITED SITE CHARACTERIZATION

JANUARY 2002

MID-ATLANTIC INDUSTRIAL SITE

COST \$15,000
(FIELD INVESTIGATION)

DURATION – 5 DAYS



PHASE I
2 DAYS
30 BORINGS
VOLATILE ORGANICS
(GC)

PHASE II
2 DAYS
35 BORINGS
METALS
(XRF)

PHASE III
1 DAY
10 BORINGS
TPHC
(IR)

EQUIPMENT:

Geoprobe™ Direct Push & Auger Systems
EMA Field (On-site) Mobile Laboratory

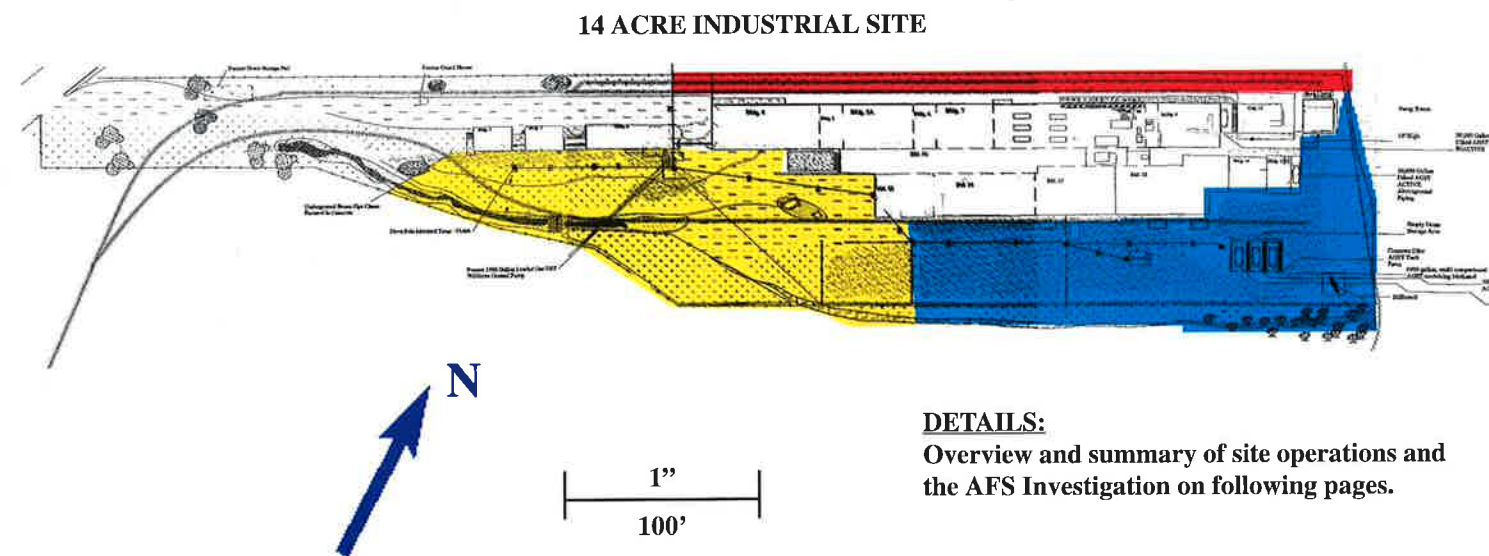
OBJECTIVE: (3 PHASE)

Delineate Soil & Groundwater
Contamination – 75 Borings, Install 13
Temporary Groundwater Sampling Points.

CONSTITUENTS OF CONCERN:

Volatile Organic Compounds, Metals, TPHC

AREAS OF CONCERN (AOC)*:



Geoprobe™ Direct Push
& Auger Systems



Mobile Laboratory (RI/FS)
Expedited Site Characterization



ENVIRONMENTAL
MANAGEMENT
ASSOCIATES, INC.

5303 Route 33/34, Farmingdale, New Jersey 07727
Ph: (732) 919-0595 • Fx: (732) 919-0758
www.emaenv.com

*Analytical results and delineation boundaries considered proprietary by clients
Copyright. All Rights Reserved. Environmental Management Associates, Inc. 2002

*AFS-Advanced Field Screening Systems is a registered Service Mark of EMA.